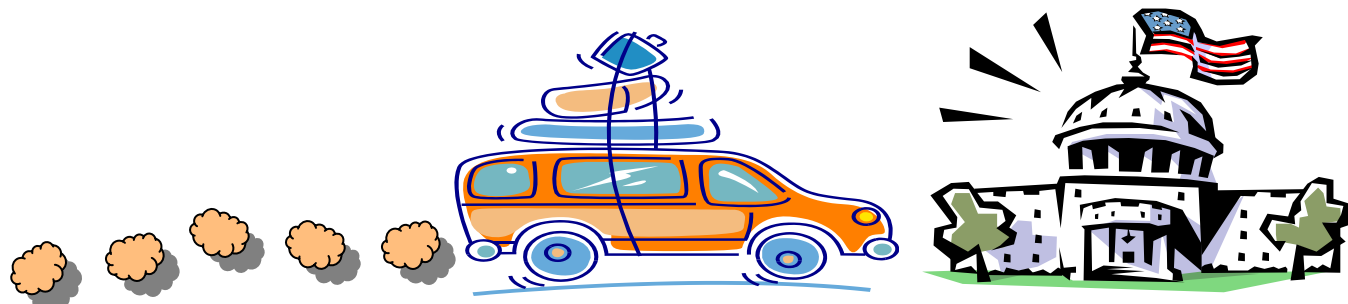




D.C. Here We Come!



Our Youth will be traveling to Washington, D.C. on Saturday, October 3rd for a fun-filled weekend in our Nation's Capitol. While in D.C. they will tour the White House, take an evening walking tour of the city, visit the National Zoo, attend a worship service at National City Christian Church and dine at The Hard Rock Café.

There are approximately 20 youth, ranging from grades 3rd—12th and 6 adult chaperones making the 4 hour journey early Saturday morning.

The estimated total cost of this trip is \$1500. which covers all expenses minus one meal.

The youth are trying to raise enough money so there will be little or no cost to them or their chaperones. A fund-raiser luncheon was held on Sunday, September 13th which brought in \$560. for the trip. They feel blessed to have a congregation who so generously supports them.

If you would like to help offset the cost of this trip and future youth activities, you may do so by designating your donation to the "Youth".

All gifts are greatly appreciated.

STATEMENT OF CALLING

West Side Christian Church is a faithful and caring church family
committed to making disciples of
Jesus Christ in our CHURCH, our COMMUNITY, and our WORLD.

CHURCH: *Equip* our church family through spiritual growth and leadership development.

COMMUNITY: *Share* the love of Christ through service.

WORLD: *Witness* through support of Disciples' missions.



A Note from Rev. Brown!



On Sunday, October 4th, we will be concluding the sermon series, "What the Heck is a Gloria Patri?" During the course of this series, we have explored the reasons for which we worship the way that we worship. We have learned about the four-fold pattern of worship: Gathering, Word, Thanksgiving, and Dismissal. October 4th is World Communion Sunday and we will be ending this series with a worship service dedicated to reflecting on the purpose of the Lord's Supper and its place in worship (Thanksgiving).

On World Communion Sunday, instead of Communion being in its "normal" place in the order of worship, we are going to move Communion to the end of the service. Also, we plan to leave the service of Thanksgiving (Lord's Supper) at the end of the service for the foreseeable future.

As we learned through this series, worship is the retelling of God's story each and every week. If worship moves as a narrative, then it's climax and denouement is in the Lord's Supper. Especially for Disciples, Communion is the most important aspect of our worship service. It is in Communion that we most profoundly experience Jesus Christ. It is in Communion that we are reminded of the way in which we are bound to one another and to God.

Most Disciples churches celebrate Communion at the end of their worship service for these reasons. In fact, according to many of you, this will not be completely new to West Siders. The Lord's Supper was celebrated at the end of the worship service for many years in West Side's earlier days.

It is our experience at the Table that should send us out into the world. It is the Lord's Supper that should be the highlight or pinnacle of what we do on Sunday morning in the sanctuary. It is at the Communion Table that we are strengthened to go forth and do God's ministry.

The Worship Team, Church Team, Choir, and Elders are all prepared for this change. We hope that it brings a new meaning to our worship service and that you gain even more from your experience at the Table, as a result. Thanks, in advance, for your openness and willingness to experience worship in a different way. God bless

Peace.

Rev. Nathan Brown

MARY'S WELLNESS CORNER

"Who Are You?"

He fashions...hearts individually. - Psalm 33:15 NKJV

God "personally formed and made" you (Isa 43:7 TM). You're the only 'you' He created, so if you fail to be who you are His kingdom won't benefit from your unique contribution. Learn from others, but always be what God called you to be. "Don't compare yourself...take responsibility for doing the...best you can with your...life" (Gal 6:4-5 TM).

Who are you? Before you answer, ask yourself this: "What are my strengths?" Paul says, "God...has made us what we are"

(Eph 2:10 TLB).

Are there certain jobs that come easily to you? If so, that says something about your particular strengths and your God-given assignment in life. Once you've identified what makes your eyes sparkle and your pulse race - go for it! "Fix your eyes on what lies before you...Don't get sidetracked" (Pr 4:25-27 NLT).

God...shaped each person in turn. - Psalm 33:13-15 TM

Paul writes concerning the family of God, "Each one of you is a separate and necessary part" (1 Co 12:27 TLB). But in order to determine where you fit in, it helps to know yourself. For example, what kind of working environment brings out the best in you? Are you motivated by other people's needs? Do you enjoy tackling challenges? The Bible says, "God shaped each person in turn," which means you're not supposed to be a carbon copy of anyone else.

And how about your relationships? Do you enjoy being part of a team, or do you function better alone? If you only come to life around people, you'll probably be miserable sitting in front of a computer all day. What lights your fire?

In the movie Chariots of Fire, Eric Liddell described his zeal for running in these words: "I believe God made me for a purpose, but He also made me fast. And when I run I feel His pleasure." What makes you feel like that? Some of us whose heroes are 'birds' walk around feeling bad about ourselves because we can't fly. You're not supposed to! God's Word says, "Be content with who you are"

(1 Pe 5:6 TM). Stop flapping around out there and give yourself permission to be the person God made you to be!

Bob Gass, Author

October Wellness Tips

BODY: Balance activities to support your emotional state and prevent physical exhaustion. Do not sit for long periods. Stand, Stretch or walk every 15 min.

MIND: Think about changing a habit or behavior before changing it. Read a book.

SPIRIT: Laugh at yourself. Keep a journal of your thoughts and feelings and write down things that you are grateful for everyday. Spend 10 min. playing with a pet and then give him/her a hug!



Mary W. Peris, Parish Nurse

DIACONATE SERVING

October 4	Brendon & Wendy McNelis Rick Lahy & Cecil Dillon
October 11 & 18	Dudley DeStefano & Nina Milam Donna & Allison Nutting
October 25	Michael & Shannon Stidham Rick & Rosemary Lahy

COUNTERS for OCTOBER

Billy Powell & Bobby Beal

COMMUNION PREPARATION for OCTOBER

Cindy Wallace & Wendy McNelis

CMF News

Monthly Breakfast Meeting

Saturday, October 24th

8:00 AM

GUEST SPEAKER: DR. MICHAEL A. CAINES

The October monthly breakfast meeting of the Christian Men's Fellowship will begin with a hearty breakfast followed by our guest speaker, Dr. Michael Andrew Caines. Dr. Caines specializes in Foot & Ankle Surgery and General Orthopedics. He graduated with AOA Honors from Case Western Reserve University Medical School in Cleveland, Ohio in 1992.

Dr. Caines trained in Orthopedic Surgery at St. Luke's Medical Center in Cleveland with a Fellowship in Foot & Ankle Reconstructive Surgery at Brigham and Women's Hospital in Boston, MA. And also received his board certification in 2000 from the American Board of Orthopedic Surgery. He joined Orthopedic Surgery Centers in 2002. Dr. Caines resides in Northern Suffolk with his wife and two sons and enjoys photography in his spare time.

Join us for a very interesting presentation as Dr. Caines will be glad to answer all your questions concerning his medical profession.

As always, please RSVP.



Pulpit Exchange

On Sunday, October 18th,

Rev. Nathan Brown of West Side Christian Church will be exchanging pulpits with Rev. Marion Brown of Broad Street United Methodist Church.

We are looking forward to worshipping with Marion on the 18th.

IN NEED OF PRAYER

Wilma Ingram
Dick Cornwell
Norman Dickens
John Milam
Wayne Thomas
Otis Mullins
Emily Gray Metz
Amy Ivy
Maud Hemby
Dick Oliver
Quimby Family
Kitty Buchanan
Nathan Brown Family
Sue Gatling
Barbara Barnhart
Murray Brown
Eloise Lowman
Jeannie Ross
Patrick Petty
Masil Jones
Lorraine Shea
Jordan Lahy
Mary Wyatt
Janice Deweese
Christie Bradley

SHUT INS

Dottie Redmon
Rev. Glenn Weaver
Ruth Blackman
Sandy Cotton
Dennis Davenport
Roland Thornton
Al Hemby
Esther Daniel

We Moved!

Brendon & Wendy McNelis

3022 Kempton Park Road

Suffolk, VA 23435

757-484-4005

brendon.mcnelis@verizon.net

wendibyrd28@verizon.net



Dear West Side,

Thank you for the many cards, calls and prayers after my recent fall. My arm is healing and I anticipate the first cast to come off on October 16th. It has been challenging to see what you can do with just one hand!

Thank you again, Cheryl Jarvis

CHURCH CARE TEAM

We are in need of three facilitators for the Church Care Team in 2010. The Church Care Team will have the responsibility of Worship & Christian Education. The Team will function as the Community Care Team has functioned, equipping, empowering, and commissioning the membership to do the ministry of this team. The ministries of the Church Care Team will be highlighted on the bulletin board outside the sanctuary beginning this Sunday. If you believe you have the gifts to be a facilitator or have any questions, please let Diane Loftis or Rev. Brown know. Thanks for your prayerful consideration.

DISCIPLES WOMEN/C.W.F.

October Circle Meetings



SHIPRAH: October 5th @ 7:00 PM - At the home of Karen Hartzog. Please bring a covered dish. We invite any ladies to join our not so round circle.

SARAH: October 1st @ 7:30 PM - West Side

REBEKAH & LYDIA: October meeting was held on September 30th.

This past year our church has transitioned from committees to care teams. The Disciple Women/CWF is on the World Care Team. So, you may ask, how does that change things. Well in a sense, it changes nothing for Disciple Women/CWF. All women who are members of West Side are members of Disciple Women/CWF, whether you are actively participating in a group or not. What we hope to see come about is an understanding that you, as women, may want to support one or more of the specific missions we support. I would like every woman in our congregation to prayerfully consider three things:

1. Being our Representative to Church Women United.
2. Being our "Blessing Box" coordinator.
3. Being our luncheon coordinator in the case of a funeral.
4. Food Pantry manager.

Check our website for more information or talk to me, Jennifer Larson or Betty McCrickard. Then step forward if you'd like to grow one of these ministries.

**Executive Board Meeting Nov. 14th @ 9:30 Or 11:30
Brunch 10:30 or 12:30**

Talents for Mission/ Spaghetti Dinner

Food Pantry

Blessing Box: www.discipleswomen.org

The Blessing Box: Living with Gratitude

For more than 50 years, the women of the Christian Church (Disciples of Christ) have had a special way to express their gratitude to God for the blessings they have received—the Blessing Box. The Blessing Box was created in 1953, the result of a dream of the women who founded Christian Women's Fellowship. Jessie Trout, who was CWF's co-founder and first executive secretary, developed the idea as an over-and- above way to help fund the wider mission of the church.

Since that time, Blessing Boxes have been kept in the homes and offices of women across the church to enable them to express their gratitude for everyday blessings by giving to others. Thanks is given for a sunny day, a birth, a reconciling experience, a welcome phone call, a child's smile, a beautiful snow fall, a flower in full bloom, relief from pain, a good book, a safe journey, and many other things. It is a way of saying "Thank you God, for your world and especially for people."

For those who participate, it is a spiritual discipline even more than a financial one. It helps keep a focus on gratitude to God and on the responsibility to share blessings with others. The amount put in may be a dime, a quarter or more. The amount is not nearly as important as the discipline of regularly remembering God's goodness thru the acts of dropping in coins and praying prayers of thanksgiving.

Has the Blessing Box made a difference?

Yes! In addition to cultivating life-long habits of thanks-giving, the Blessing Box has generated millions of dollars in mission support. From 1999 to spring 2009, Blessing Boxes have contributed a total of \$2,663,882 for the mission of the church, with \$311,814 of that going to support women's ministries. Since 2007, 50 percent of the donations go directly to the ministries carried out by the women of our church through the International Disciples Women's Ministries. This makes a significant difference in the mission of the church at home and abroad.

How can I make a difference?

Our dream is to put a Blessing Box into the hands of every Disciples woman sitting in the pew of a Disciples of Christ church. You can help by using the materials from this page within your local congregation.

(CWF News continued on next page)

(Continued from page 4)

CWU

Church Women United (CWU) is a national volunteer Christian ecumenical women's movement initiated and carried out by women in the United States and Puerto Rico. It is a movement that brings together women of diverse races, cultures and traditions in closer Christian fellowship, prayer, advocacy, and action for peace with justice in the world. CWU engages millions of women representing twenty-six supporting denominations and participating Christian women.

www.churchwomen.org



Talents for Mission and Spaghetti Supper

Disciple Women will be hosting Talents for Mission and Spaghetti Supper on
Saturday, November 7th
5 p.m. till 7 p.m.

The ladies will be selling tickets, watch and listen for further news.
Anyone who would like to contribute to the Talents Market, please do!
We have homemade goods, craft items and canned foods,
so get busy and plan to participate.

Welcome to Holiday House

All children have needs and as parents, we must find ways to meet the challenges they face as they mature. Whether researching a good college or finding a good therapeutic residential living placement, it takes planning and a little research to find the right fit.

Intellectually disabled children are often affected by multiple disabilities. Unlike children that mature to become more independent, the child experiencing disability will have needs that over time increase. Many homes are not adequately set up to meet the challenges of these changes.

This is where homes such as Holiday House become such an important resource. Holiday House is designed to accommodate a broad range of emotional, physical, and cognitive issues presented by children and offers a complete package of therapeutic, educational, and recreational services that is unique to Hampton Roads. Welcome to our web site where you can learn more about the facility and contact us regarding your needs. We feel the more you know our programs, the more you will value the level of professionalism and the quality of care delivered every day at Holiday House.

www.holidayhouse.portsmouth.va.us

Stewardship Quote for October

"What the Bible says is true—it is better to give than receive" -Ted Turner

The Story of the Magic Steward

We are all aware of the stewards on the board, in the choir, and in the Sunday school classrooms, but we pay little attention to the invisible, magical stewards, who silently serve. They are everywhere, doing little tasks and big ones.

How do the donuts magically appear every Sunday accompanied by coffee and tea? Since there is no money mentioned in the budget for lawn maintenance, there must be silent servants who do that. How do the attendance sheets make their way from the sanctuary to the office? Who counts the contributions? Do the hymnals, Bibles, envelopes, and pencils pop into place each Sunday by themselves? Who audits our books annually? How do the different liturgical holiday decorations appear right on schedule? Very mysterious.

Even money shows up unexpectedly. Just like magic, money arrives for lawn mowers, roof repairs, parking lot paving, and mortgage reduction. Our bills get paid on time, which, in this economy, is really magical.

It is magical, what happens in the church.
One might even call it a miracle.

Karen Hartzog

A Note from the Board Chair

Fellow Brothers and Sisters, with just 3 months remaining in this calendar year we find ourselves still with no Board Chair for 2010. Letters have been sent to a number of individuals whose spiritual gifts included this type of leadership but often God calls us beyond what we think are our capabilities. He equips us with gifts as we need them. So please continue to be in prayer about this particular situation.

The audit committee delivered its report to the Board at the September meeting. One of their recommendations is that we continue to move toward automating the process of financial giving record keeping and statements. I am very cognizant that financial giving and the sensitivity of that data is of utmost concern to so many of you, but I am very confident that our church software, which is designed to handle this aspect of church information, will contain all the necessary safeguards to maintain confidentiality that you require. While Dave McCrickard will continue to manage this process manually for 2010, we should be preparing for the automation to be ready for the 2011 church year.

The Worship Team continues to visit churches and to examine a wide variety of worship styles. They are very purposefully proceeding at a measured pace and will be surveying the congregation at large before they make any recommendations to the Church Care Team. If you have input for them, please let them know. You may contact Rosemary Lahy or Fran Gray.

October finds us in the midst of budgets and nominations. Budget first pass will come before the Board on Oct. 13th and final approval will be on Nov 10th with the congregational meeting set for Nov. 15th. The following Sunday will be Stewardship Sunday. We will have a preliminary budget prepared for your review prior to the Nov 10th board meeting so that you have time for consideration and input. There may be some revisions in the final draft presented in November but we want to give you as much advance information as we can.

Lastly, Nathan, Larry Hackler and I attended the District VIII cluster meeting on the Region's Capital Campaign. We were given a packet of data to share with our Stewardship Chair about how each church can support this critical need. Stay tuned for more information on this campaign.

In Christ's service,

Kitty



WOW! Great things are happening with the Angel Food Ministry.

Our last distribution reached over 200 people and was the smoothest yet. Wavy TV 10 came and interviewed a family that has been truly blessed through Angel Food.

We began our outreach to Greenwood Commons and Churchland Commons this month with a fantastic start. West Side has partnered with Simonsdale Presbyterian Church and Little Grove Baptist for delivery of Angel Food to these senior living communities.

Over the past month, we have been busy passing out Angel Food information at many locations including preschool open houses, apartment complexes, laundromats, hair salons, and large community events. We have more scheduled as area schools are having their first PTA meetings in the coming weeks.

We welcomed the VA/DC Angel Food representatives to West Side as we hosted a regional Angel Food training and information meeting. Through this meeting we were able to meet and share ideas with other Angel Food host sites.

We are currently working with three area churches to expand Angel Food Ministry so that more people can receive food relief.

We have received our CAT terminal, this is the card swipe machine found in most retail stores. This will allow us to accept credit, debit, cash and food stamp orders at Church and also out in the community.

West Side has accomplished so much with Angel Food in just a little amount of time. We are all so blessed to be part of a ministry that helps so many people.

Thanks for EVERYTHING you do to make Angel Food a Success!

Beth

Important Tid-bits !

October Birthday's

2nd:	David McCrickard
7th:	Bob Nutting
8th:	Garland Cook
9th:	Dick Oliver
12th:	Mary Peris
14th:	Emily Nutting
15th:	Kristen Brown
	Courtney Brown
16th:	Mary Bond
19th:	Joe Antonucci
24th:	Ruth Blackman
	Bubba Jenson
25th:	Heather Larson
26th:	Masil Jones
27th:	Tom Larson
	Connor Gardner
28th:	DeeAnn Acors
29th:	Breon Wray
	Keon Wray
31st:	Ben Jarvis



*If your birthday was missed, we do apologize.
Please notify Trish so she can update
her records.*

Lectionary Readings

October 2009

<u>DATE</u>	<u>READINGS</u>
October 4th:	Job 1:1;2:1-10 Psalm 26 Hebrews 1:1-4; 2:5-12 Mark 10:2-16
October 11th:	Job 23:1-9, 16-17 Psalm 22:1-15 Hebrews 4:12-16 Mark 10:17-31
October 18th:	Job 38:1-7, (34-41) Psalm 104:1-9, 24, 35c Hebrews 5:1-10 Mark 10:35-45
October 25th:	Job 42:1-6, 10-17 Psalm 34:1-8, (19-22) Hebrews 7:23-28 Mark 10:46-52

Newsletter Deadline October 21



SERVING AT OASIS

October 15th
10:00 AM



Angel Food Distribution
Saturday, October 17th
9 am - 11 am



Wednesday Night Pot Luck Supper



October
21st
6:30 PM

Please bring 2 dishes to share

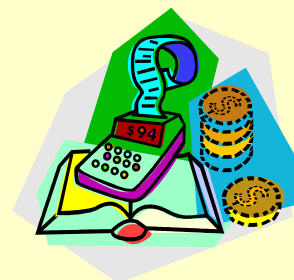


Don't forget to set your
clocks back 1 hour on
Saturday night,
October 31st.

- **Administrative Cabinet:**
Tuesday, October 6th @ 7:00 PM
- **Official Board:**
Tuesday, October 13th @ 7 PM
- **Pastoral Relations:**
Tuesday, October 20th @ 6:00 PM
- **Elders:**
Tuesday, October 20th @ 7:30 PM

Treasurer's Corner

GENERAL FUND Balance as of 9/30/09	\$ (1,208.23)
MORTGAGE BALANCE AS OF 9/15/09	\$ 38,489.09
LESS September PAYMENT	\$ (1,145.49)
BALANCE OWED AS OF 9/15/09	\$ 37,343.60
MISSIONS PAID TO DATE	\$ 9,586.58
Balance owed to Savings for Parking Lot:	\$ 1,238.52



NOTE: September was an extremely high expense month. All of our expenses were not met. Missions was NOT paid, so we are currently one month behind.

Total unpaid expenses for September **\$1,757.19**

Our current mortgage payment is \$1,145.49. We did not collect enough to cover our payment last month and we have not collected enough to cover our next month payment of \$1,145.49.

October 2009

Monthly Planner

Sunday	Monday	Tuesday	Wednesday	Thursday	Friday	Saturday																																																																																				
<div style="display: flex; justify-content: space-around;"> <div style="border: 1px solid black; padding: 5px; text-align: center;"> <p>September</p> <table border="1"> <tr><td>S</td><td>M</td><td>T</td><td>W</td><td>T</td><td>F</td><td>S</td></tr> <tr><td></td><td>1</td><td>2</td><td>3</td><td>4</td><td>5</td><td></td></tr> <tr><td>6</td><td>7</td><td>8</td><td>9</td><td>10</td><td>11</td><td>12</td></tr> <tr><td>13</td><td>14</td><td>15</td><td>16</td><td>17</td><td>18</td><td>19</td></tr> <tr><td>20</td><td>21</td><td>22</td><td>23</td><td>24</td><td>25</td><td>26</td></tr> <tr><td>27</td><td>28</td><td>29</td><td>30</td><td></td><td></td><td></td></tr> </table> </div> <div style="border: 1px solid black; padding: 5px; text-align: center;"> <p>November</p> <table border="1"> <tr><td>S</td><td>M</td><td>T</td><td>W</td><td>T</td><td>F</td><td>S</td></tr> <tr><td>1</td><td>2</td><td>3</td><td>4</td><td>5</td><td>6</td><td>7</td></tr> <tr><td>8</td><td>9</td><td>10</td><td>11</td><td>12</td><td>13</td><td>14</td></tr> <tr><td>15</td><td>16</td><td>17</td><td>18</td><td>19</td><td>20</td><td>21</td></tr> <tr><td>22</td><td>23</td><td>24</td><td>25</td><td>26</td><td>27</td><td>28</td></tr> <tr><td>29</td><td>30</td><td></td><td></td><td></td><td></td><td></td></tr> </table> </div> </div>				S	M	T	W	T	F	S		1	2	3	4	5		6	7	8	9	10	11	12	13	14	15	16	17	18	19	20	21	22	23	24	25	26	27	28	29	30				S	M	T	W	T	F	S	1	2	3	4	5	6	7	8	9	10	11	12	13	14	15	16	17	18	19	20	21	22	23	24	25	26	27	28	29	30						<p>1</p> <p>9:00 AM - 2:30 PM Preschool/K-5 and Lunch Bunch</p> <p>6:00 PM Youth Plan- ning Meeting</p> <p>7:00 PM - 8:30 PM Bible Study</p> <p>7:30 PM CWF (Sarah)</p>	<p>2</p> <p>9:00 AM - 2:30 PM Preschool/K-5 and Lunch Bunch</p>	<p>3</p> <p style="text-align: right; border: 1px solid black; padding: 2px;">Youth Trip to DC</p>
S	M	T	W	T	F	S																																																																																				
	1	2	3	4	5																																																																																					
6	7	8	9	10	11	12																																																																																				
13	14	15	16	17	18	19																																																																																				
20	21	22	23	24	25	26																																																																																				
27	28	29	30																																																																																							
S	M	T	W	T	F	S																																																																																				
1	2	3	4	5	6	7																																																																																				
8	9	10	11	12	13	14																																																																																				
15	16	17	18	19	20	21																																																																																				
22	23	24	25	26	27	28																																																																																				
29	30																																																																																									
<p>4</p> <p>9:00 AM Coffee 9:45 AM Church School 11:00 AM Worship Angel Food Orders after Worship</p> <p style="text-align: right; border: 1px solid black; padding: 2px;">Youth Trip to DC</p>	<p>5</p> <p>9:00 AM - 2:30 PM Preschool/K-5 and Lunch Bunch</p> <p>5:00 PM - 7:00 PM Angel Food Orders</p> <p>7:00 PM CWF (Shipharah)</p>	<p>6</p> <p>9:00 AM - 2:30 PM Preschool/K-5 and Lunch Bunch</p> <p>7:00 PM Admi n. Cabinet</p>	<p>7</p> <p>9:00 AM Prayer Group 9:00 AM - 2:30 PM Preschool/K-5 and Lunch Bunch</p> <p>2:00 PM - 4:00 PM Angel Food Orders</p> <p>7:15 PM Choir Practice</p>	<p>8</p> <p>9:00 AM - 2:30 PM Preschool/K-5 and Lunch Bunch</p> <p>7:00 PM - 8:30 PM Bible Study</p>	<p>9</p> <p>9:00 AM - 2:30 PM Preschool/K-5 and Lunch Bunch</p>	<p>10</p>																																																																																				
<p>11</p> <p>9:00 AM Coffee 9:45 AM Church School 11:00 AM Worship Angel Food Orders after Worship</p>	<p>12</p> <p>9:00 AM - 2:30 PM Preschool/K-5 and Lunch Bunch</p> <p>5:00 PM - 7:00 PM Angel Food Orders</p> <p style="text-align: center; border: 1px solid black; padding: 2px;">Columbus Day Observance</p>	<p>13</p> <p>9:00 AM - 2:30 PM Preschool/K-5 and Lunch Bunch</p> <p>7:00 PM Official Board</p>	<p>14</p> <p>9:00 AM Prayer Group 9:00 AM - 2:30 PM Preschool/K-5 and Lunch Bunch</p> <p>2:00 PM - 4:00 PM Angel Food Orders</p> <p>7:15 PM Choir Practice</p>	<p>15</p> <p>9:00 AM - 2:30 PM Preschool/K-5 and Lunch Bunch</p> <p>10:00 AM Oasis</p> <p>7:00 PM - 8:30 PM Bible Study</p>	<p>16</p> <p>9:00 AM - 2:30 PM Preschool/K-5 and Lunch Bunch</p>	<p>17</p> <p>9:00 AM - 11:00 AM Angel Food Distribution</p>																																																																																				
<p>18</p> <p>9:00 AM Coffee 9:45 AM Church School 11:00 AM Worship Angel Food Orders after Worship</p> <p style="text-align: right; border: 1px solid black; padding: 2px;">Pulpit Exchange</p>	<p>19</p> <p>9:00 AM - 2:30 PM Preschool/K-5 and Lunch Bunch</p> <p>5:00 PM - 7:00 PM Angel Food Orders</p> <p style="text-align: center; border: 1px solid black; padding: 2px;">Newsletter Deadline</p>	<p>20</p> <p>9:00 AM - 2:30 PM Preschool/K-5 and Lunch Bunch</p> <p>6:00 PM Pastoral Relations</p> <p>7:30 PM Elders</p>	<p>21</p> <p>9:00 AM Prayer Group 9:00 AM - 2:30 PM Preschool/K-5 and Lunch Bunch</p> <p>2:00 PM - 4:00 PM Angel Food Orders</p> <p>6:30 PM Pot Luck Dinner</p> <p>7:15 PM Choir Practice</p>	<p>22</p> <p>9:00 AM - 2:30 PM Preschool/K-5 and Lunch Bunch</p> <p>7:00 PM - 8:30 PM Bible Study</p>	<p>23</p> <p>9:00 AM - 2:30 PM Preschool/K-5 and Lunch Bunch</p>	<p>24</p> <p>8:00 AM CMF Breakfast Blood Pressure & Sugar Screening</p>																																																																																				
<p>25</p> <p>9:00 AM Coffee 9:45 AM Church School 11:00 AM Worship Angel Food Orders after Worship</p>	<p>26</p> <p>9:00 AM - 2:30 PM Preschool/K-5 and Lunch Bunch</p> <p>5:00 PM - 7:00 PM Angel Food Orders</p>	<p>27</p> <p>9:00 AM - 2:30 PM Preschool/K-5 and Lunch Bunch</p>	<p>28</p> <p>9:00 AM Prayer Group 9:00 AM - 2:00 PM Music Club (FC & Sanctuary)</p> <p>9:00 AM - 2:30 PM Preschool/K-5 and Lunch Bunch</p> <p>2:00 PM - 4:00 PM Angel Food Orders</p> <p>7:15 PM Choir Practice</p>	<p>29</p> <p>9:00 AM - 2:30 PM Preschool/K-5 and Lunch Bunch</p> <p>7:00 PM - 8:30 PM Bible Study</p>	<p>30</p> <p>9:00 AM - 2:30 PM Preschool/K-5 and Lunch Bunch</p> <p>10:30 AM - 1:00 PM - FC In Use (Preschool Party)</p>	<p>31</p> <p>Change Clock back 1 hour</p>																																																																																				